

PANGOLIN DIAMONDS CORP

A Diamond Company

TSX-V: PAN

August 2014

Cautionary Note Regarding Forward-Looking Statements

Some statements contained in this presentation are forward-looking and, therefore, involve uncertainties or risks that could cause actual results to differ materially. The content of information contained in this Presentation has not been approved by an authorized person within the meaning of any Act of government. Reliance upon this Presentation for engaging in any investment activity may expose an individual to risk of losing all of the property or other assets invested. If any person is in any doubt as to the contents of this Presentation, they should seek independent advice from a person who is authorized for the purposes and who specializes in advising in investments of this kind. This Presentation is being supplied to you solely for your information. While the information contained herein has been prepared in good faith, neither Pangolin Diamonds Corp. (“Company”) nor its shareholders, directors, officers, agents, employees or advisers give, has given or has authority to give, any representations or warranties (express or implied) as to, or in relation to, the accuracy, reliability or completeness of the information in this Presentation, or any revision thereof, or of any written, audiovisual or oral information made or to be made available to any interested party or its advisers and liability therefore is expressly disclaimed. This Presentation does not constitute, or form part of, an admission document, listing particulars or a prospectus relating to the Company, nor does it constitute an offer to sell or issue any shares in the Company. No reliance may be placed by an individual, interested party or its advisers for any purpose whatsoever on the information contained in this Presentation or on its completeness, accuracy or fairness thereof, nor is any responsibility accepted by the Company for any errors, misstatements in, or omission from, this Presentation or any direct or consequential loss however arising from any use of, or reliance on, this Presentation or otherwise in connection with it by an individual or interested party. This Presentation may not be reproduced or redistributed, in whole or in part, to any other person, or published, in whole or in part, for any purpose without the prior consent of the Company. The contents of this Presentation are confidential and are subject to updating, completion, revision, further verification and amendment without notice.

Highlights

- **Botswana is the best diamond address in the world**
 - Largest diamond producing country by value
 - Rated #1 in Africa (2005 to 2013) , #25/212 in the world for mining by Fraser Institute (Ontario is #26)
- **4 separate project areas 100% owned in Botswana**
 - Magi target is a large diamond-bearing kimberlitic intrusive
 - Other projects have discovered diamonds and indicators in soils
- **Team has a proven track record**
 - Chairman co-founded African Diamonds acquired by Lucara Diamonds for \$100M
- **Secure, transparent mineral tenure system, no land issues, no historical issues, pro-mining Government**

Capital and Corporate Structure

- Common shares outstanding: 72,935,210
- Options outstanding: 2,775,000
- Warrants outstanding: 14,458,520
- Market Cap (28 July 2014) \$8 m CDN
 - All time high share price: \$0.53, current \$0.11
- Raised \$3.8m plus \$1m private investment by Chairman
- Operates two wholly owned Botswana subsidiaries:
 - Pangolin Diamonds (Pty) Limited
 - Geocontracts Botswana (Pty) Limited

Founder & Chairman

- **Dr. Leon Daniels, Ph.D. Geochemistry, B.Sc., B.Sc. Hons. Geology, Chairman, Executive Director**
 - with over 35 years experience in diamond exploration and production. He discovered the Klipfontein kimberlite pipe in South Africa early in his career. He previously worked for Falconbridge Exploration in Botswana, evaluating the 180 ha crater M1 kimberlite, for Trans Hex Group in Swaziland evaluated the Dokolwayo Diamond Mine, for Roan Selection Trust International in Angola, oversaw production of five alluvial mines, and evaluated the River Ranch kimberlite in Zimbabwe. Dr. Daniels also discovered the DK4 kimberlite (only kimberlite in the Orapa kimberlite field not discovered by De Beers), the Mambali kimberlite field in Zimbabwe for Trillion Resources Ltd., and more recently co-founded African Diamonds Plc (AIM: AFD), subsequently acquired by Lucara Diamond Corp. (TSX: LUC), in 2010 for \$100M.

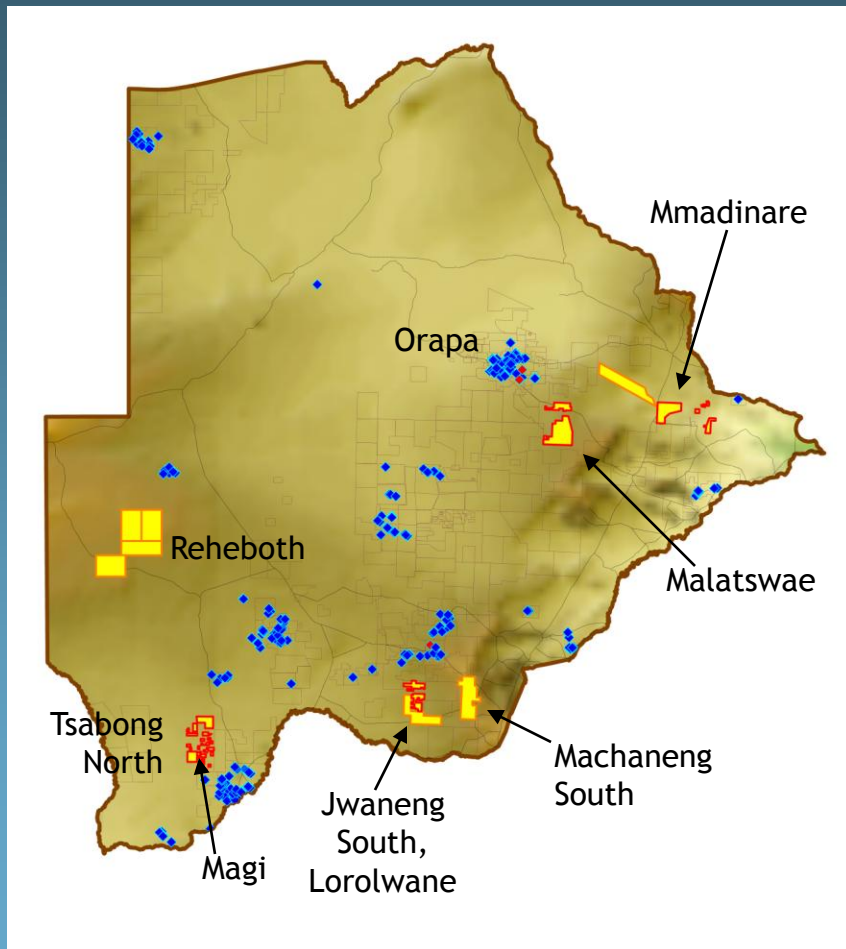
Our Directors

- **Jean Lafleur, P.Geo., B.Sc., M.Sc. Geology, Director**
 - a Professional Geologist with 30 years of experience in various capacities within the mineral exploration industry, including company, project and property evaluations and audits, resource estimations, project planning and execution, supervision and management.
- **Louis Peloquin, BBA, LLB, LLM, Director**
 - business consultant combining several specialties, including transactional law, and has extensive international experience in management, mergers and acquisitions, corporate development, government relations and corporate finance.
- **Thomas A. Fenton, LLB, Director**
 - a partner of the Toronto based law firm of Aird & Berlis LLP. His practice encompasses corporate finance and merger and acquisitions. Mr. Fenton is currently a director and/or officer of several public and private companies.

Our Management

- **Rick G. Bonner, President & Chief Executive Officer, P.Geol.**
 - a Professional Geologist over 30 years of mineral exploration experience on four continents exploring for gold, uranium, copper with BHP and diamonds with Rio Tinto (Diavik).
- **Graham Warren, B.Comm., CMA, Chief Financial Officer**
 - a senior financial executive with over 25 years of progressive experience with emerging and established companies in the environmental, telecom, mining, oil and gas, and biotech sectors.

Our Products

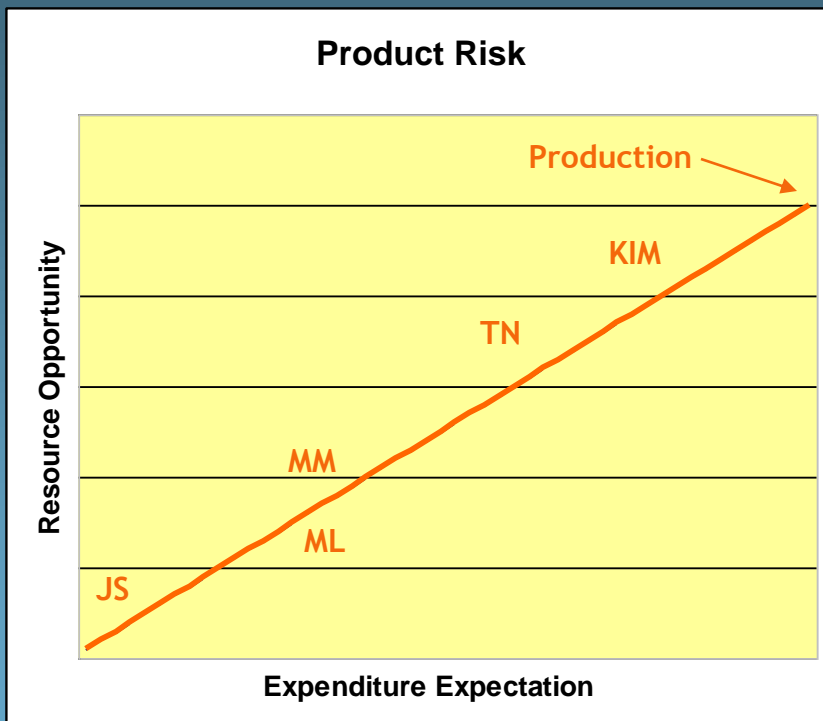


- Four projects 100% Pangolin
 - Tsabong North
 - Jwaneng South
 - Mmadinare
 - Malatswae
- Licenced area = 2,840.7 km²
 - All licences valid until July 2016
- Two Orapa-area tenders
 - Production opportunity
- Pending Applications 100% PAN
 - Machaneng South
 - Reheboth
 - Mmadinare - Motloutse ext
 - Jwaneng South - Lorolwane ext

“Blue & red diamonds are kimberlites”

Product Risk

- Jwaneng South (JS) - Greenfield
 - High risk, low cost
- Malatswae (ML) - Greenfield
 - High risk, low cost
- Mmadinare (MM) - Discovery
 - High risk, medium cost
- Tsabong North (TN) - Delineation
 - Medium risk, high cost
 - Resource opportunity
- KIM Tenders - Evaluation
 - Low risk, high cost
 - Production opportunity



“Our projects are selected to spread risk & trend to production.”

PANGOLIN DIAMONDS CORP



TSX-V: PAN

pangolindiamonds.com

[@pangolindiamond](https://twitter.com/pangolindiamond)